



Prairie Shelterbelt Program Pest Leaflets

CARAGANA APHID

Acyrtosiphon caraganae

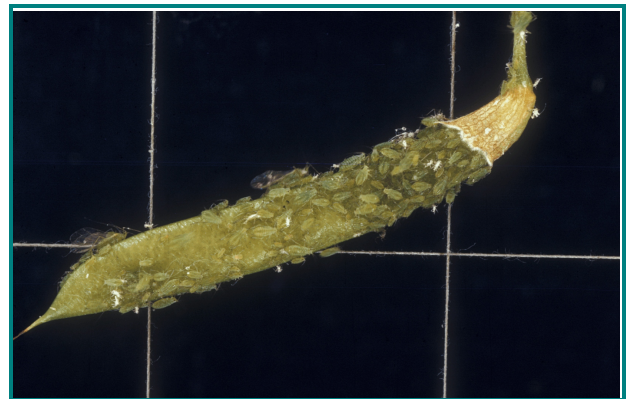
Hosts: Caragana species.

Appearance and Life History: Caragana aphids emerge as nymphs from overwintering eggs in May and June. The aphids are soft-bodied, pear-shaped, approximately 2 mm in length and are light green to green in colour. All caragana aphids, except for the last generation, are females that are able to reproduce without mating and give birth to live young. First generation adults are wingless, whereas later generations may have a partial population of winged adults. When the host plant becomes overcrowded, the winged forms migrate to other plants. The caragana aphid is capable of completing 20 generations per year with each adult giving birth to 20-25 nymphs. By late September, parasites, predators and the maturing of the host plant causes a decline in the aphid population and only small isolated colonies may be found. At this time, male and female aphids are produced. Both nymphs and adult males are easily recognized by their reddish colour, compared to the greenish colour of other forms. After mating, the females deposit their overwintering eggs in bark crevices on the host plant.



Damage: The nymphs and adults of the caragana aphid feed in colonies on the leaves, twigs and seed pods of caragana. The aphids cause damage by piercing the plant with their mouth parts and sucking the sap. The leaves wilt, and in severe cases drop prematurely. During a heavy infestation entire shelterbelts have been completely defoliated, reducing annual growth. The following year the shrubs will re-foliate as usual.

Control: The caragana aphid can be controlled by one of the following insecticides: diazinon, dimethoate, malathion, permethrin or pirimicarb. Before applying an insecticide, check for beneficial predators, such as ladybugs and birds, and remember that aphid populations are severely reduced by late summer.



For further information please contact:

PFRA Shelterbelt Centre

P.O. Box 940

Indian Head, Saskatchewan, S0G 2K0

Phone: 1-866-766-2284

Fax: (306) 695-2568

Email: pftratree@agr.gc.ca

Internet: www.agr.gc.ca/pfra/shelterbelt.htm

